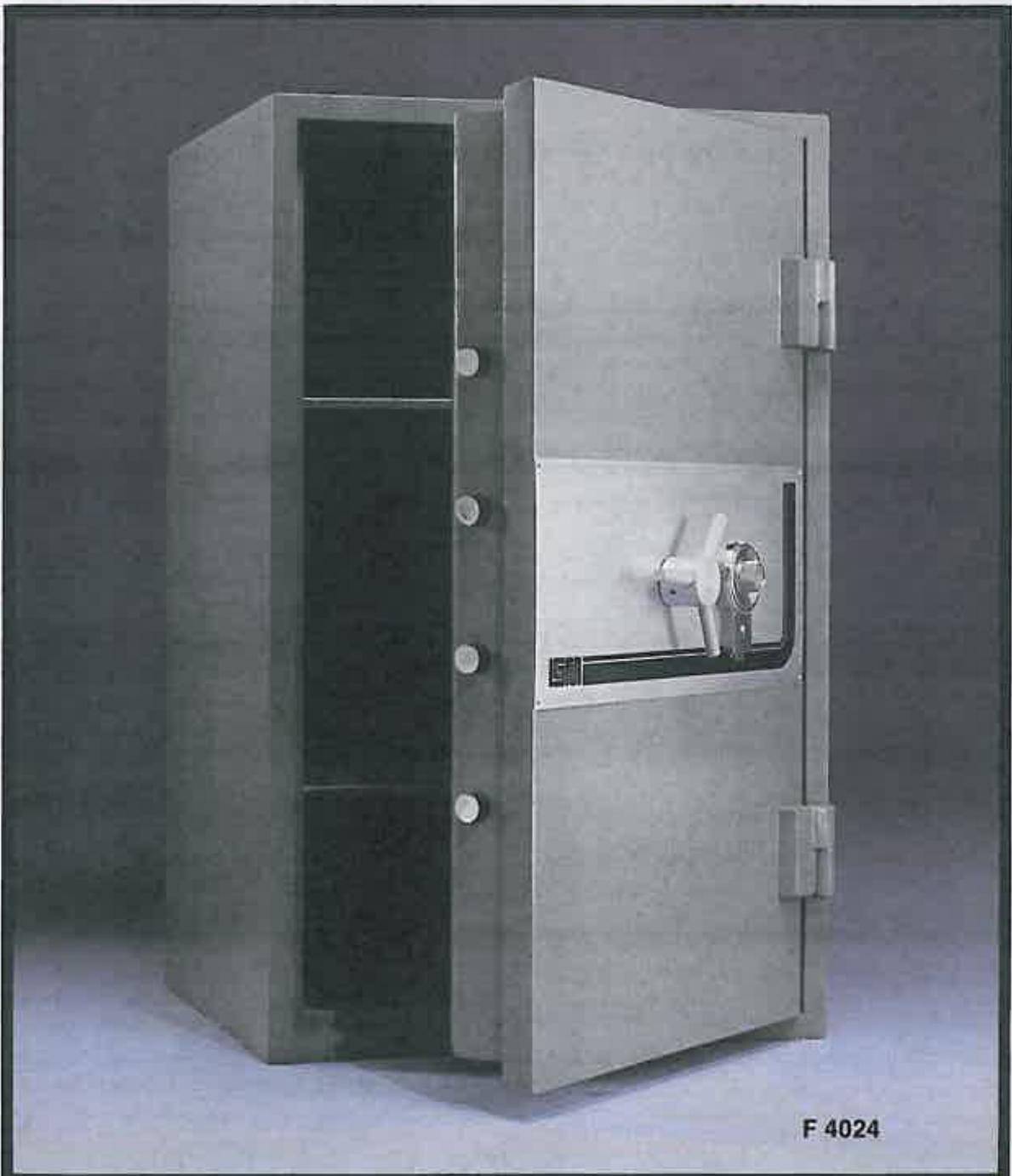


ISM

***Jewel Guard TL-30
Mark II***



F 4024

ISM

Jewel Guard TL-30 Mark II

ISM is proud to present a new generation of Underwriters Laboratories, Inc., tested and labeled TL-30 Jewelry/Money Safes. This sophisticated safe has advance design features in the vital mechanisms not found in any other safe in this price class. The locking mechanism and boltwork are precision engineered with automatic devices that will resist a concentrated burglary attack.

DOOR

The Mark II door has a minimum of 1½" of steel, plus a 3/8" hardened drill resisting steel plate protecting the entire locking mechanism. In addition, special hardened steel ball bearings are placed in strategic locations to resist drilling attacks.

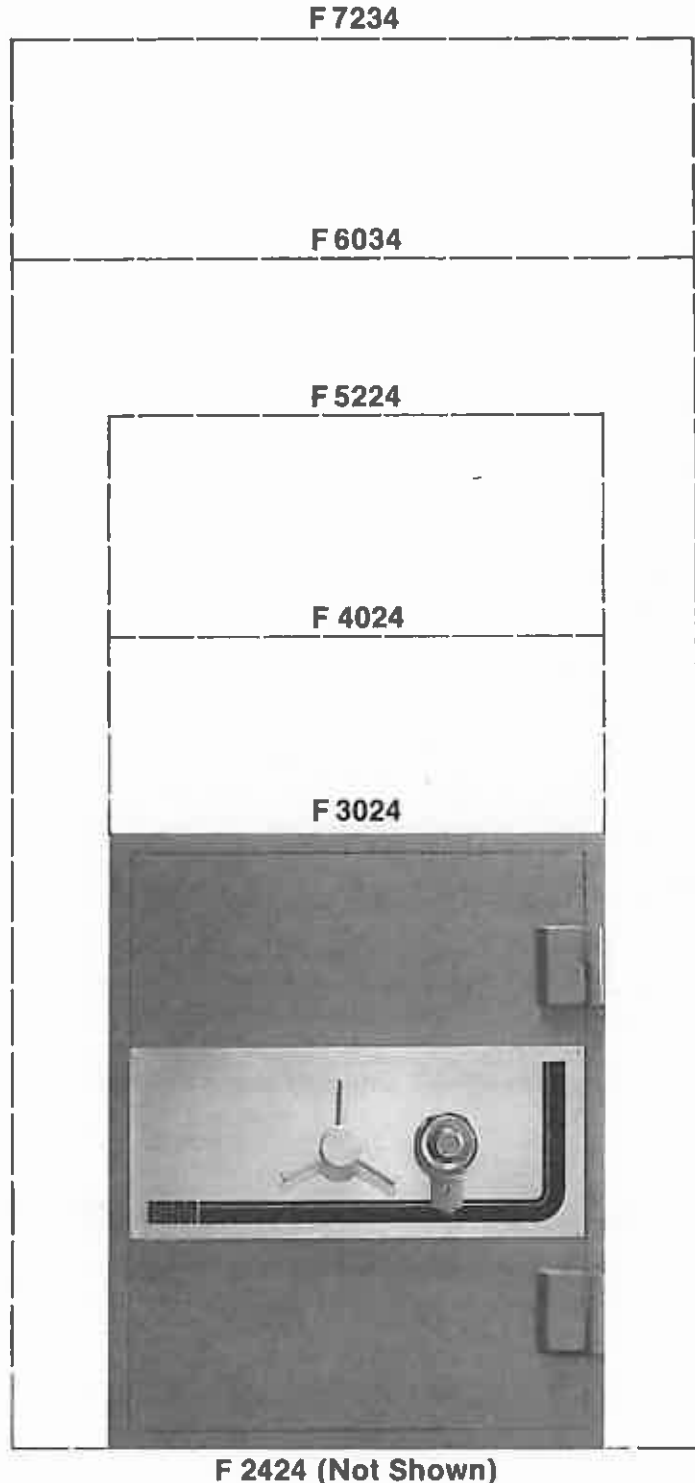
BODY

The body of the Mark II is a minimum of 1" thick steel. The construction employs advance welding methods to form a jointless outer shell of tough steel plate. The welds are hand ground to give a smooth uninterrupted finish.

LOCKS

Standard TL-30's are equipped with a 3 wheel combination lock with 1,000,000 possible combinations. **The Mark II is equipped with a 4 wheel, Underwriters Laboratories Group 2, key change combination lock with over 100,000,000 possible combinations.** The combination dial and ring are satin nickel finished, and the dial is equipped with a punch proof spindle. A bank examiners hasp lock is incorporated into the key locking combination dial as standard equipment. This offers dual control requiring two people to be present to open the safe.

Two or three movement time locks are available as an optional extra.





AMBUSH ALARM/SILENT SIGNAL

The Mark II is equipped with a unique device that can be used to alert the police or alarm company if a hold-up is in progress. This system must be incorporated and connected by your alarm company.

BOLTWORK

The Mark II is equipped with three (3) way active boltwork found on no other TL-30 in this class, plus an additional double action locking mechanism. By turning the handle to the locking position, the bolts first extend in three (3) directions. Then a second movement engages two (2) internal bolts which block an attack on the side bolts. Eight (8) 1 3/16" diameter chrome plated bolts (4 on the side, 2 on top, and 2 on the bottom) provide superior positive locking action. Four (4) fixed bolts lock the hinge side of the door. Models 6034 and 7234 have five (5) bolts on each side. The entire mechanism is protected by a special plating process, preventing oxidation and rusting.

RELOCKING MECHANISM

Only on the finest Jewelers/Bankers-type safes selling for many times the price of the Mark II is found the unique glass plate covering the locking area. Any heavy hand tool, drill, torch, or explosive attack in this area will activate the mechanism, relocking the safe independent of the combination lock.

INTERIOR FITTINGS

Adjustable/removable shelves are available for setting up the safe interior to accept jewelry trays, cash trays, rolled coins, and other valuables.

FINISH

A modern stainless capstan wheel and an anodized aluminum facia panel compliment the durable paint finish, standard on all ISM Security Equipment.

INSURANCE

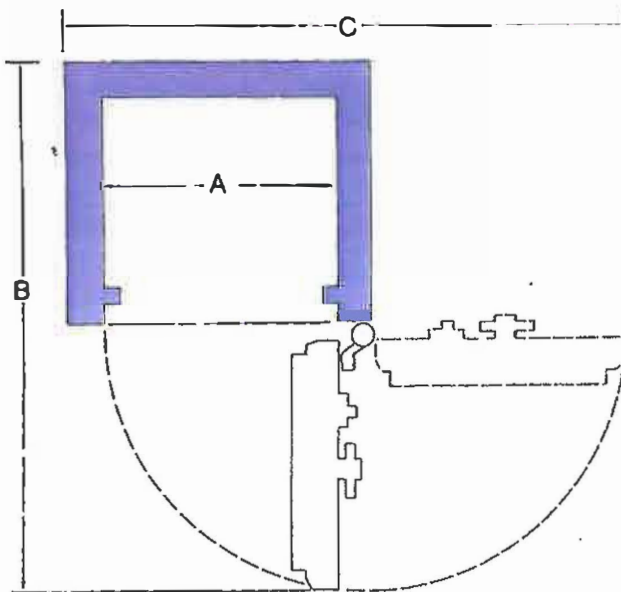
ISM Jewelguard Mark II TL-30 safes qualify for the low "F" insurance rates for either Mercantile safe or Broadform Policies. Also, the Mark II carries a "G" rating under the corresponding Bank insurance classification.

DIMENSIONS AND WEIGHTS

MODEL	INSIDE DIMENSIONS			OUTSIDE DIMENSIONS			CUBIC CAPACITY	APPROX. WEIGHT
	*HEIGHT	*WIDTH	DEPTH	HEIGHT	WIDTH	**DEPTH		
F 2424	24" (.610m)	24" (.610m)	20" (.508m)	26 1/4" (.668m)	26" (.660m)	25" (.635m)	11520	1300 lbs. (590 kg)
F 3024	30" (.762m)	24" (.610m)	20" (.508m)	32 1/4" (.819m)	26" (.660m)	25" (.635m)	14400	1540 lbs. (699 kg)
F 4024	40" (1.016m)	24" (.610m)	20" (.508m)	42 1/4" (1.073m)	26" (.660m)	25" (.635m)	19200	1890 lbs. (858 kg)
F 5224	52" (1.321m)	24" (.610m)	20" (.508)	54 1/4" (1.378m)	26" (.660m)	25" (.635m)	24960	2310 lbs. (1048 kg)
F 6034	60" (1.524m)	34" (.864m)	20" (.508m)	62 1/4" (1.581m)	36" (.914m)	25" (.635m)	40800	3190 lbs. (1447 kg)
F 7234	72" (1.829m)	34" (.864m)	20" (.508m)	74 1/4" (1.886m)	36" (.914m)	25" (.635m)	48960	3950 lbs. (1792 kg)
F 7234D	72" (1.829m)	34" (.864m)	26" (.660m)	74 1/4" (1.886m)	36" (.914m)	31" (.787m)	63648	4480 lbs. (2032 kg)

*For clear height and width, deduct 1 1/2" from each dimension for rebate bar. **Add 2" (.051m) to outside depth for handle

DOOR SWING PROJECTIONS

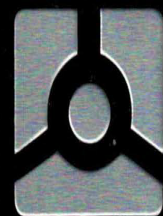


DOOR SWING DIMENSIONS

A	B	C
24"	50 1/4"	49 1/2"
34"	60 1/4"	59 1/2"
34"D	66 1/4"	59 1/2"

In line with our policy always to provide the best in security, ISM reserves the right to incorporate any improvements and alter any specifications without prior notice.

ISM



MEGASAFE

HIGH SECURITY SAFES

(800) 345-6552

www.megasafe.com